



ASL INNOVATECH CORPORATION  
Innovative Instrumentation and Automation

*Get to know*

**ASL'S**

PRODUCT AND SERVICE

Take a look at the major products that we offered.



[sales@aslinnovatechcorp.com](mailto:sales@aslinnovatechcorp.com)

+639171283977

<http://aslinnovatechcorp.com/>

# PRODUCTS

The major products offered by ASL Innovatech Corporation fall under four main categories.



FIELD INSTRUMENTATION

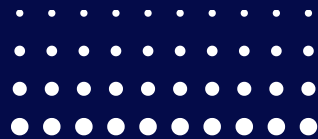
ELECTRIC AND POWER

AUTOMATION

SECURITY AND SYSTEM

# PRODUCTS & BRANDS

ASL Innovatech represents the following brands and products:





AIR FILTER REGULATOR  
(IMI PRECISION/NORGREN)



SOLENOID VALVES  
(IMI PRECISION/NORGREN)



PNEUMATIC CYLINDER  
(IMI PRECISION/NORGREN)



VARIABLE FREQUENCY DRIVERS  
(VFD)/ SOFT STARTER CONTROL  
TECHNIQUE  
(NIDEC)



SOFT STARTER CONTROL  
TECHNIQUE  
(NIDEC)



FLOW AND LEVEL  
(SOR)



TEMPERATURE AND PRESSURE  
TRANSMITTERS  
(YOKOGAWA)



ELECTRIC ACTUATOR  
(ABB ONTRAC)  
(MOE REMOTE TYPE)



GEARBOX/ GEARMOTOR



ANALYTICAL INSTRUMENTS FOR  
WATER AND GAS  
(YOKOGAWA)



ANALYTICAL ANALYZER  
(ENVEA)



GATE VALVE



BUTTERFLY VALVE



GLOVE VALVE



MEWAY VALVE



ELECTRICAL TRANSFORMER  
(DRY TYPE)



ELECTRICAL TRANSFORMER  
(CAST RESIN)



ELECTRICAL TRANSFORMER  
(SUBSTATION)



SHIHLIN ELECTRIC  
(TAIWAN)



UPS SYSTEM  
(VERTIV USA)



TEST MEASURING  
INSTRUMENT  
(YOKOGAWA)



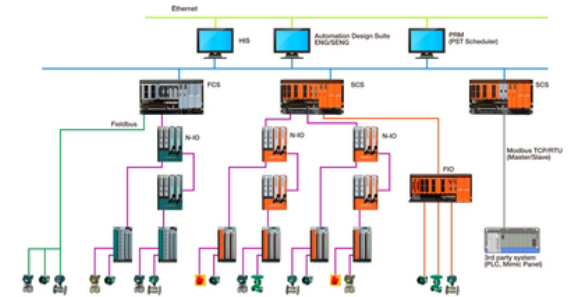
UPS SYSTEM DELTA  
(MEWAY)



PLC  
(YOKOGAWA)



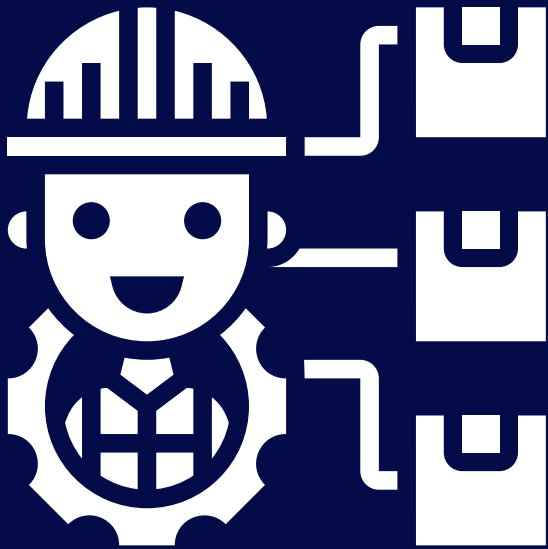
SCADA  
(YOKOGAWA)



DCS SYSTEM AND PARTS  
(YOKOGAWA)

# SERVICES

In every product that we supply, we package the following services:



CALIBRATION

INSTALLATION, ELECTRICAL, CIVIL &  
MECHANICAL WORKS

COMMISSIONING





## **Calibration**

**We perform calibration of delivered products to ensure that they are functioning as they are expected to.**



## **Installation, Electrical, Civil & Mechanical works**

**Installation is included for field instrumentations and electrical items. All With Electrical, Civil and Mechanical scope of works.**



## **Commissioning**

**To ensure that the delivered equipment functions according to the design objectives and specifications, we conduct an on-site test.**